

Handles



Code	Size CC	Overall Size	Projection	Width	Finish	Material
1004	96 mm	100 mm	19 mm	10 mm	BN,SN,SC	zinc alloy
	128 mm	132 mm	25 mm	11 mm		



Code	Size CC	Overall Size	Projection	Width	Finish	Material
1005	96 mm	105 mm	30 mm	14 mm	BN,SN,SC	zinc alloy
	128 mm	148 mm	30 mm	14 mm		



Code	Size CC	Overall Size	Projection	Width	Finish	Material
1008	64 mm	85 mm	18 mm	12 mm	BN,SN,SC	zinc alloy
	96 mm	118 mm	20 mm	14 mm		
	128 mm	156 mm	24 mm	16 mm		

Limited stocks available



Code	Size CC	Overall Size	Projection	Width	Finish	Material
1009	96 mm	140 mm	18 mm	11 mm	BN,SN,SC	zinc alloy

Limited stocks available



Code	Size CC	Overall Size	Projection	Width	Finish	Material
1012	96 mm	114 mm	20 mm	10 mm	BN,SN,SC	zinc alloy
	128 mm	148 mm	25 mm	10 mm		



Code	Size CC	Overall Size	Projection	Width	Finish	Material
1015	96 mm	112 mm	11 mm	15 mm	BN,SN,SC	zinc alloy
	128 mm	151 mm	21 mm	19 mm		



Code	Size CC	Overall Size	Projection	Width	Finish	Material
1022	96 mm	121 mm	19 mm	8 mm	BN,SN,SC	zinc alloy

Limited stocks available



Code	Size CC	Overall Size	Projection	Width	Finish	Material
1023	96 mm	126 mm	17 mm	6 mm	BN,SN,SC	zinc alloy
	128 mm	156 mm	23 mm	6 mm		

Limited stocks available



Code	Size CC	Overall Size	Projection	Width	Finish	Material
1029	96 mm	100 mm	12 mm	14 mm	BN,SN,SC	zinc alloy
	128 mm	131 mm	15 mm	19 mm		
	160 mm	166 mm	19 mm	25 mm		

Limited stocks available



Code	Size CC	Overall Size	Projection	Width	Finish	Material
1045	128 mm	153 mm	26 mm	13 mm	BN,SN,SC	zinc alloy



Code	Size CC	Overall Size	Projection	Width	Finish	Material
1062	96 mm	144 mm	19 mm	14 mm	BN,SN,SC	zinc alloy
	128 mm	182 mm	22 mm	16 mm		

Limited stocks available

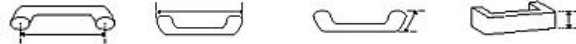


Code	Size CC	Overall Size	Projection	Width	Finish	Material
1064	96 mm	127 mm	17 mm	14 mm	BN,SN,SC	zinc alloy
	128 mm	161 mm	17 mm	15 mm		

Limited stocks available



Code	Size CC	Overall Size	Projection	Width	Finish	Material
1075	64 mm	102 mm	21 mm	9 mm	BN,SN,SC	zinc alloy
	96 mm	142 mm	24 mm	10 mm		
	128 mm	174 mm	29 mm	10 mm		



Code	Size CC	Overall Size	Projection	Width	Finish	Material
1090	96 mm	114 mm	29 mm	8 mm	SC, PC	zinc alloy



Code	Size CC	Overall Size	Projection	Width	Finish	Material
1091	96 mm	105 mm	20 mm	12.5 mm	BN	zinc alloy



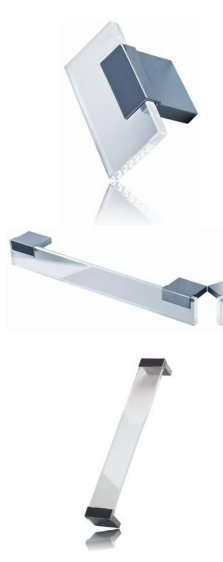
Code	Size CC	Overall Size	Projection	Width	Finish	Material
1092	64 mm	72 mm	22 mm	12 mm	BN,SN,SC	zinc alloy
	96 mm	112 mm	22 mm	12 mm		
	128 mm	131 mm	26 mm	14 mm		
	160 mm	167 mm	31 mm	14 mm		
	256 mm	262 mm	31 mm	14 mm		



Code	Size CC	Overall Size	Projection	Width	Finish	Material
1211	96 mm	113	27 mm	10 mm	BN,SC, PC	aluminium
	128 mm	142	27 mm	12 mm	BN, SC, SN	zinc alloy



Code	Size CC	Overall Size	Projection	Width	Finish	Material
1222	32 mm	64 mm	29 mm	34 mm	Polished Chrome	Duron
1223	192 mm	302 mm	29 mm	34 mm	Polished Chrome	Duron
1225	224 mm	304 mm	29 mm	34 mm	Polished Chrome	Duron



Barhandles



Code	Size CC	Overall Size	Projection	Diameter	Finish	Material
2001115	64 mm	115 mm	35 mm	12 mm	SS and SC	SS = Stainless
2001155	96 mm	155 mm	35 mm	12 mm		
2001200	128 mm	200 mm	35 mm	12 mm		Steel
2001250	160 mm	250 mm	35 mm	12 mm		SC = Steel
2001300	192 mm	300 mm	35 mm	12 mm		
2001350	224 mm	350 mm	35 mm	12 mm		
2001400	288 mm	400 mm	35 mm	12 mm		
2001450	320 mm	450 mm	35 mm	12 mm		
2001500	360 mm	500 mm	35 mm	12 mm		
2001600	480 mm	600 mm	35 mm	12 mm		



Code	Size CC	Overall Size	Projection	Diameter	Finish	Material
2002	96 mm	102 mm	32 mm	10 mm	SC	zinc alloy
	128 mm	138 mm	32 mm	10 mm		
	160 mm	168 mm	32 mm	10 mm		
	192 mm	200 mm	32 mm	10 mm		
	288 mm	296 mm	32 mm	10 mm	SS	stainless



Code	Size CC	Overall Size	Projection	Width	Finish	Material
2004108	96 mm	108 mm	30 mm	12x12 mm	SS	304 Stainless Steel
2004140	128 mm	140 mm	30 mm	12x12 mm		
2004172	160 mm	172 mm	30 mm	12x12 mm		
2004204	192 mm	204 mm	30 mm	12x12 mm		
2004236	224 mm	236 mm	30 mm	12x12 mm		
2004268	256 mm	268 mm	30 mm	12x12 mm		
2004300	288 mm	300 mm	30 mm	12x12 mm		
2004332	320 mm	332 mm	30 mm	12x12 mm		
2004364	352 mm	364 mm	30 mm	12x12 mm		
2004396	384 mm	396 mm	30 mm	12x12 mm		
2004428	416 mm	428 mm	30 mm	12x12 mm		
2004492	480 mm	492 mm	30 mm	12x12 mm		
2004524	512 mm	524 mm	30 mm	12x12 mm		
2004620	608 mm	620 mm	30 mm	12x12 mm		



Code	Size CC	Overall Size	Projection	Width	Finish	Material
3009	128 mm	160 mm	34 mm	15 mm	BN,SN,SC	zinc alloy



Code	Size CC	Overall Size	Projection	Width	Finish	Material
3043	96 mm	115 mm	29 mm	12 mm	BN,SN,SC	zinc alloy



Code	Size CC	Overall Size	Projection	Width	Finish	Material
3047	128 mm	200 mm	20 mm	12 mm	BN,SN,SC	zinc alloy
	160 mm	242 mm	22 mm			



Code	Size CC	Overall Size	Projection	Width	Finish	Material
3060	160 mm	197mm	29 mm	12 mm	BN,SN,SC	zinc alloy



Code	Size CC	Overall Size	Projection	Width	Finish	Material
3061	128 mm	158 mm	25 mm	20 mm	BN,SN,SC	zinc alloy
	160 mm	175 mm	26 mm	24 mm		
	192 mm	226 mm	27 mm	24 mm		



Code	Size CC	Overall Size	Projection	Width	Finish	Material
3064	64 mm	85 mm	25 mm	8 mm	BN,SN,SC	zinc alloy
	96 mm	119 mm	26 mm	8 mm		
	128 mm	155 mm	26 mm	8 mm		
	160 mm	192 mm	27 mm	8 mm		
	192 mm	224 mm	27 mm	8 mm		
	240 mm	272 mm	27 mm	8 mm		



Code	Size CC	Overall Size	Projection	Width	Finish	Material
3076	128 mm	142 mm	19 mm	17 mm	BN,SN,SC	zinc alloy
	160 mm	179 mm	21 mm	19 mm		



Code	Size CC	Overall Size	Projection	Width	Finish	Material
3090	128 mm	166 mm	30 mm	19 mm	BN,SN,SC	zinc alloy



Code	Size CC	Overall Size	Projection	Width	Finish	Material
3126	128 mm	179 mm	33 mm	14 mm	BN and SC	zinc alloy
	288 mm	339 mm	33 mm	14 mm		



Code	Size CC	Overall Size	Projection	Width	Finish	Material
3129	128 mm	137 mm	33 mm	15 mm	BN and SC	zinc alloy
	288 mm	297 mm	33 mm	15 mm		

Code	Size CC	Overall Size	Projection	Width	Finish	Material
3802	160 mm	175 mm	33 mm	13 mm	Pewter	zinc alloy
	256 mm	271 mm	33 mm	13 mm	Pewter	zinc alloy

Code	Size CC	Overall Size	Projection	Width	Finish	Material
4018	96 mm	118 mm	23 mm	8 mm	BN, SC, PC	aluminium



Code	Size CC	Overall Size	Projection	Width	Finish	Material
4019	96 mm	108 mm	32 mm	10 mm	BN,SN,SC	zinc alloy
	128 mm	140 mm	32 mm	10 mm		
	160 mm	172 mm	32 mm	10 mm		
	192 mm	204 mm	32 mm	10 mm		
	224 mm	236 mm	32 mm	10 mm		
	256 mm	268 mm	32 mm	10 mm		

Limited stocks available

Siena



Code	Size CC	Overall Size	Projection	Width	Finish	Material
4020	32 mm	40 mm	25 mm	19 mm	SC	aluminium
	96 mm	108 mm	25 mm	19 mm		
	128 mm	140 mm	25 mm	19 mm		
	160 mm	172 mm	25 mm	19 mm		
	192 mm	204 mm	25 mm	19 mm		
	224 mm	236 mm	25 mm	19 mm		
	288 mm	300 mm	25 mm	19 mm		
	384 mm	396 mm	25 mm	19 mm		
	480 mm	492 mm	25 mm	19 mm		
	608 mm	620 mm	25 mm	19 mm		

Estrada



Code	Size CC	Overall Size	Projection	Width	Finish	Material
4021	60 mm	60 mm	40mm	8 mm	SC	aluminium
	120 mm	120 mm	40mm	8 mm		
	240 mm	240 mm	40mm	8 mm		
	400 mm	400 mm	40mm	8 mm		

Estiva



Code	Size CC	Overall Size	Projection	Width	Finish	Material
4022	300 mm	300 mm	35 mm	15 mm	SC	aluminium



Avesta



Code	Size CC	Overall Size	Projection	Width	Finish	Material
4023	96 mm	116 mm	24 mm	19 mm	SC, BN, PC	aluminium
	128 mm	148 mm	24 mm	19 mm		
	160 mm	180 mm	24 mm	19 mm		
	192 mm	212 mm	24 mm	19 mm		
	224 mm	244 mm	24 mm	19 mm		
	256 mm	276 mm	24 mm	19 mm		
	288 mm	308 mm	24 mm	19 mm		
	320 mm	340 mm	24 mm	19 mm		



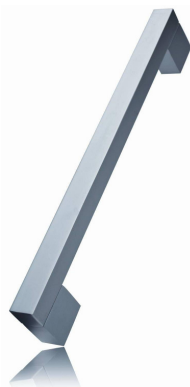
Aseda



Code	Size CC	Overall Size	Projection	Width	Finish	Material
4024	96 mm	110 mm	35 mm	16 mm	SC and BN	aluminium
	128 mm	142 mm	35 mm	16 mm		
	160 mm	174 mm	35 mm	16 mm		
	192 mm	206 mm	35 mm	16 mm		
	224 mm	238 mm	35 mm	16 mm		
	256 mm	270 mm	35 mm	16 mm		
	288 mm	302 mm	35 mm	16 mm		
	352 mm	366 mm	35 mm	16 mm		
	416 mm	430 mm	35 mm	16 mm		
	512 mm	526 mm	35 mm	16 mm		
	608 mm	622 mm	35 mm	16 mm		
	736 mm	750 mm	35 mm	16 mm		
960 mm	974 mm	35 mm	16 mm			



Merano



Code	Size CC	Overall Size	Projection	Width	Finish	Material
4029	128 mm	152 mm	35 mm	13 mm	SC and BN	aluminium
	160 mm	184 mm	35 mm	13 mm		
	192 mm	216 mm	35 mm	13 mm		
	224 mm	248 mm	35 mm	13 mm		
	288 mm	312 mm	35 mm	13 mm		
	352 mm	376 mm	35 mm	13 mm		



Alessio



Code	Size CC	Overall Size	Projection	Width	Finish	Material
4385	96 mm	108 mm	38 mm	14 mm	SC	aluminium
	128 mm	140 mm	38 mm	14 mm		
	192 mm	204 mm	38 mm	14 mm		
	320 mm	332 mm	38 mm	14 mm		
	480 mm	492 mm	38 mm	14 mm		
	544 mm	556 mm	38 mm	14 mm		
	736 mm	748 mm	38 mm	14 mm		

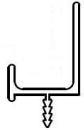
**Alda
G' rail**

Code	Overall Size	Width	height	Finish	Material
4520	3 m	20 mm	35 mm	SC	aluminium



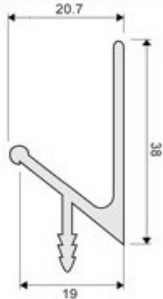
**Armino
L' rail**

Code	Overall Size	Width	Height	Finish	Material
4530	3 m	21 mm	30 mm	SC	aluminium



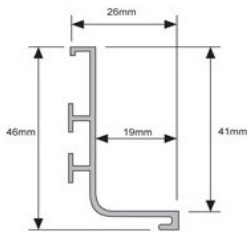
Molise V rail

Code	Overall Size	Width	Height	Finish	Material
4540	3 m	19 mm	38 mm	Anodised grey	aluminium



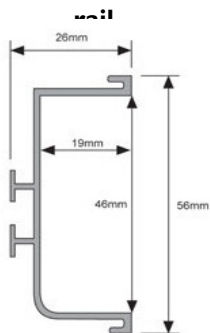
Calabria Top rail

Code	Overall Size	Width	Height	Finish	Material
4550	3 m	26 mm	46 mm	Anodised grey	aluminium



**Trentino centre
rail**

Code	Overall Size	Width	Height	Finish	Material
4555	3 m	26 mm	56 mm	Anodised grey	aluminium



Code	Overall Size	Width	Height	Finish	Material
BR45	Fixing bracket	42 x 42 mm	13 mm		steel
SR45	Screw	M4 x 8 mm			steel



Code	Size CC	Overall Size	Projection	Width	Finish	Material
5003	64 mm	77 mm	12 mm	39 mm	Antique	zinc alloy

Code	Size CC	Overall Size	Projection	Width	Finish	Material
5004	96 mm	104 mm	30 mm	14 mm	Antique	zinc alloy

Code	Size CC	Overall Size	Projection	Width	Finish	Material
6010		100 mm	37 mm	100 mm	SS	Stainless Steel

Knobs



Code	Overall Size	Projection	Width	Finish	Material
1112		20 mm	25 x 25 mm	BN,SN,SC	zinc alloy

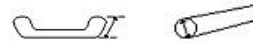
Code	Overall Size	Projection	Width	Finish	Material
1114		24 mm	19 x 19 mm	BN,SN,SC	zinc alloy

Code	Overall Size	Projection	Width	Finish	Material
1115	25 x 25 mm	24 mm	9 mm	BN,SN,SC	zinc alloy

Code	size	Projection	Diameter	Finish	Material
1160	S	23 mm	17 mm	BN,SN,SC	zinc alloy
	L	26 mm	25 mm		

Code	size	Projection	Diameter	Finish	Material
1161		23mm	12 mm	SC	zinc alloy

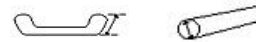
Knobs



Code	size		Projection	Diameter	Finish	Material
I162			20 mm	25 mm	SC	zinc alloy



Code		Overall Size	Projection	Width	Finish	Material
I164		35 mm	18 mm	8 mm	SC	zinc alloy



Code	size		Projection	Diameter	Finish	Material
I165	S		17 mm	24 mm	BN,SN,SC	zinc alloy
	L		26 mm	29 mm		



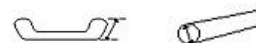
Code			Projection	Diameter	Finish	Material
I166			16 mm	17 mm	BN,SN,SC	zinc alloy



Code		Overall size	Projection		Finish	Material
I167		19 x 19 mm	25 mm		SC	zinc alloy



Code	Size CC	Overall Size	Projection	Width	Finish	Material
I168	32 mm	44 mm	20 mm	8 mm	BN,SN,SC	zinc alloy



Code	size		Projection	Diameter	Finish	Material
I172	S		16 mm	11 mm	BN,SN,SC	zinc alloy
	L		19 mm	14 mm		





Code			Projection	Diameter	Finish	Material
1179-22			28 mm	22 mm	BN	zinc alloy



Code		Overall Size	Projection		Finish	Material
1182		20x44	16 mm		SC	zinc alloy



Code	Size CC	Overall Size	Projection		Finish	Material
1187	32 mm	56 mm	25 mm		BN,SN,SC	zinc alloy



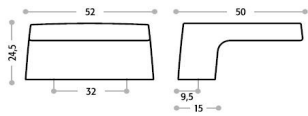
Code			Projection	Width	Finish	Material
1194			25 mm	20 x 21 mm	BN,SN,SC	zinc alloy



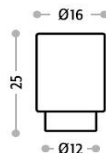
Code			Projection	Diameter	Finish	Material
1208			22 mm	28 mm	BN,SN,SC	zinc alloy



Code		Overall Size	Projection	Width	Finish	Material
1221		52x50 mm	24.5 mm	52 mm	White Black	Duron



Code			Projection	diameter	Finish	Material
1223			25 mm	16 mm	White Black	Duron



Code	Size CC	Overall Size	Projection	Width	Finish	Material
1299	32 mm	41 mm	20 mm	10 mm	BN,SN,SC	zinc alloy

Knobs



Code	Overall Size	Projection	Width	Finish	Material
2049	51 mm	13 mm	9 mm	BN,SN,SC	zinc alloy

Limited stocks available



Code	Overall Size	Projection	Finish	Material
3590	15 x 14 mm	23 mm	SC	aluminium



Code	Diameter	Projection	Finish	Material
3595	27 mm	25 mm	SC	aluminium



Code	Projection	diameter	Finish	Material
3801	25 mm	33 mm	Pewter	zinc alloy



Code	Overall Size	Projection	Finish	Material
3905	26 x 18 mm	16 mm	SC	zinc alloy

Flush Pulls



Code	Size CC	Overall Size	Depth	inside dim.	Finish	Material
1132	64 mm	76x42 mm	10 mm	18x48 mm	BN,SN,SC	zinc alloy
	96 mm	108x42 mm	10 mm	18x80 mm		
	128 mm	142x42 mm	10 mm	18x111 mm		



Code	Size CC	Overall Size	Depth	inside dim.	Finish	Material
1141		100 x 38 mm	13 mm	68 x 18 mm	BN,SN,SC	zinc alloy
		135 X 38 mm	13 mm	95 x 18 mm		
		165 x 50 mm	13 mm	115 x 25 mm		

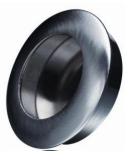


Code	Size CC	Overall Size	Depth	inside dim.	Finish	Material
1145	96 mm	124 mm	13 mm	21x76mm	BN,SC	aluminium
	160 mm	188 mm	13 mm	21x140mm		
	224 mm	252 mm	13 mm	21x204mm		
	288 mm	316 mm	13 mm	21x268mm		

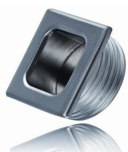


Code	Size CC	Overall Size	Depth	inside dim.	Finish	Material
1150	160 mm	171x52 mm	14 mm		SC	zinc alloy

for 18 mm board only



Code	Size CC	Overall Size	Depth	inside dim.	Finish	Material
1159		41 mm diam.	7 mm	25 mm diam.	BN,SN,SC	zinc alloy



Code	Size CC	Overall Size	Depth	inside dim.	Finish	Material
3038S	24 mm	26 x 26 mm	11 mm	16 x 16 mm	BN,SN,SC	zinc alloy



Code	Size CC	Overall Size	Depth	inside dim.	Finish	Material
3038L	40 mm	46 x 46 mm	11 mm	26 x 26 mm	BN,SN,SC	zinc alloy

Triple hook



Code					Finish	Material
5018					BN,SN,SC	zinc alloy

Doorstops



Code		Diameter	Height		Finish	Material
5019		25 mm	70 mm		BN	zinc alloy

Magnetic doorstop, interior only



Code		Diameter	Height		Finish	Material
5025		47 mm	25 mm		BN, SC	zinc alloy



Code		Diameter	Length		Finish	Material
5029		30 mm	76 mm		BN, SC	zinc alloy

doorstop without catch



Code		Diameter	Length		Finish	Material
5029C		30 mm	76 mm		BN, SC	zinc alloy

doorstop with catch



Code		Diameter	Height		Finish	Material
5031		19 mm	50 mm		SS	stainless steel



Code		Diameter	Height		Finish	Material
5034		10 mm	83 mm		BN, SC	zinc alloy



Code		Diameter	Height		Finish	Material
5036		16 mm	83 mm		BN, SC	aluminium

Pull handles

back to back

Locarno



Code	Size CC	Overall Size	Projection	Width	Finish	Material
4035	160 mm	184 mm	43 mm	13 mm	BN, SC	Aluminium
	224 mm	248 mm	43 mm	13 mm		



Code	Size CC	Overall Size	Projection	Width	Finish	Material
8551	170 mm	200 mm	54 mm	21 mm	SS	Stainless steel



Code	Size CC	Overall Size	Projection	Width	Finish	Material
8552	170 mm	200 mm	54 mm	21 mm	SS	Stainless steel



Code	Size CC	Overall Size	Projection	Width	Finish	Material
8555	165 mm	195 mm	55 mm	88 mm	SS	Stainless steel



Code	Size CC	Overall Size	Projection	Width	Finish	Material
8556	155 mm	191 mm	58 mm	78.5 mm	SS	Stainless steel